

Bari

Instrument Audition Submission Information and Guidelines

2020 Jazz House Summer Workshop and Fall 2020 – Spring 2021 Academic Year

A brief overview about this year's audition process:

1. The audition submission window this year is **April 1-30, 2020**
2. All auditions **MUST** be submitted on YouTube **in one complete and uninterrupted video**
3. For each section of the audition, prepare and record the portion of the music that is applicable to your skill level
 - Auditions will be judged first and foremost on accuracy, so please prioritize a portion of well-prepared material over performing everything (quality over quantity)
 - However, Jazz House Kids will have a better sense of your skill level with more of the audition material
4. **Any student interested in the 2020 Jazz House Big Band (for either Summer Workshop or 2020-21 Academic Year) MUST perform both big band excerpts for his/her instrument**

Registration

All auditions must be submitted online for the 2020 Jazz House Summer Workshop and Fall 2020 – Spring 2021 academic year program. Please note – our academic year program is a full-year commitment from September 2020 through May 2021. **All registrations are to be filled out by the parent/guardian, not the student.**

To register and submit your audition, please follow the instructions below:

1. To access our Active registration page please use the link below:
<https://campscui.active.com/orgs/JazzHouseKids>
2. Select a program (2020 Summer Workshop and/or Fall 2020-Spring 2021) by clicking “View” next to that program
3. On the following page, click “Add” to move the session into your selections and then click “continue”
4. Look up your Active account
 - If you have an Active account, be sure to use the proper email address associated with the existing account to login; existing Active accounts will automatically pre-fill any information that has already been submitted to the system

- If you do not have an Active account, enter your email address and click “next” to create an account
5. For Summer Workshop students who will be living on campus, please be sure to select “Housing” in the session options on this page
 6. If you wish to register for an additional program or tuition assistance, please return to the Active homepage and select the additional item
 7. **To return to your Active account** (edit your information, add your YouTube audition link, or make a payment), please use the link below:
<https://campsself.active.com/JazzHouseKids>
 8. **PLEASE NOTE:** A \$125 non-refundable deposit, which includes a \$25 registration fee, is due at registration

Video Uploading

The video audition submission window is April 1-30, 2020; if you complete your registration before your video is ready, simply return to your account at any point throughout the month of April to submit your YouTube audition link

To upload your video for your Jazz House Kids audition, please follow the instructions below:

1. Go to www.youtube.com
2. Click the “create” button in the upper right corner and select “upload video,” if necessary
3. **In order to keep audition videos private, please be sure the privacy tab in the middle of the screen is set to “unlisted” instead of “public;” this will keep the video private to those who do not have a direct link**
4. Click on “Select files to upload” and locate/select your video
5. Once the video begins to upload, please type your name into the “title” box
6. On the left side of the screen, toward the top, you will find your URL link just below “Your video will be live at;” this URL link will also be displayed in the middle of the screen as soon as the video is fully uploaded
7. Please copy this URL link and paste it into your Active account on the line that reads “Link to audition video on YouTube”

Audition Guidelines

Please carefully read through all information below, as your audition will not be considered if these guidelines are not followed

1. **The audition submission window is open from April 1-30, for all programs;** in order for your audition to be given full consideration, you **must** submit within this submission window
2. Any auditions submitted after April 30 will only be considered based on instrument availability
3. **All auditions must be submitted as a YouTube link;** please paste the **entire** URL link into the appropriate “Link to audition video on YouTube” line in your Active account (see above for details on video uploading)
4. Videos from a phone or similar device are completely acceptable as we are most interested in your playing and not the quality of the video
5. **All auditions must be video recorded in one uninterrupted, unedited segment**
6. **Please leave your video up on YouTube through September 1, 2020;** it is recommended to submit your YouTube video as “unlisted” rather than “public,” as it can only be accessed if the exact URL link is known
7. If you are interested in playing a second instrument in the program, you must submit a separate video for each instrument
 1. Jazz House Kids will try to accommodate students wishing to participate on two instruments where scheduling and instrumentation needs allow
 2. As priority must be given to any student on their primary instrument, Jazz House Kids cannot guarantee proper placement on secondary instruments
8. **Auditions should be approximately 6-7 minutes in length, and shall not exceed 10 minutes at the maximum**
 - **At the beginning of your video, please state your name, age, grade and school**
 - Each audition will consist of four sections:
 1. Scales and arpeggios
 2. Blues and improvisation
 3. Ballad
 4. Big band excerpts
 - **Please do not use a metronome for any sections of the audition**

For each section, record only as much as you are comfortable and prepared to play. Auditions will be judged first and foremost on accuracy, so please prioritize a smaller portion of well-prepared material over performing everything (quality over quantity). However, Jazz House

Kids will have a better sense of your skill level with more material presented. As this is a placement audition, we do not need to hear you perform everything perfectly, but instead are looking to understand the best placement for your optimal learning experience.

Detailed Audition Submission Information

Please prepare your audition using the audition packet specified for your instrument specifically. Also note below any specifications for your specific instrument.

Scales & Arpeggios

1. Only perform the scales or arpeggios that you are comfortable playing
2. ACCURACY is the primary element for judging scales; speed/technique will be taken into consideration, but only if the scale/arpeggio is played correctly
3. Play multiple octaves, when applicable

Blues & Improvisation (**NEW OPTION THIS YEAR)

1. Please select one of the two blues options (either *Bags' Groove* or *Blues For Alice*) – more advanced students who wish to demonstrate their abilities on chord progressions are encouraged to select *Blues For Alice*
2. Play the melody to *Bags' Groove* or *Blues For Alice* one time in the range most comfortable for you on your instrument
3. Improvise for two choruses of the form
4. If you currently do not improvise at all, please state that on the video before you perform, and play the melody to *Bags' Groove* with the recording; we strongly encourage everyone to attempt an improvised solo
5. For accompaniment:

- For *Bags' Groove* use **track 7 (*Blues in key of Bb concert*)** from Jamey Aebersold's *How To Play Jazz & Improvise, Volume 1*:
https://www.amazon.com/gp/product/B007Q0WBRM?ie=UTF8&qid=1333636230&redirect=true&ref_dm_sp_alb&sr=8-16
- For *Blues For Alice* use **track 12 (*Bird Blues*)** from Jamey Aebersold's *Nothin' But Blues, Volume 2*:
https://www.amazon.com/gp/product/B007Q0WJDI/ref=dm_ws_sp_ps_dp

Ballad

1. Using the attached leadsheet for your instrument, perform the melody to *My Funny Valentine*, unaccompanied

2. The melody may be embellished, but should still be clearly recognizable
3. The primary objectives for this portion of the audition should focus on consistent time, strength of sound, and phrasing

Big Band Excerpts

1. With the exception of anyone very new to their instrument, all students should include *Big Band excerpt #1* in their audition; we strongly encourage all students to also attempt *Big Band excerpt #2*; **for anyone wanting to be considered for the full year Jazz House Big Band, *Big Band Excerpt #2* MUST BE PERFORMED.**
2. Please pay close attention to notated tempo and style for each piece

NOTE: Students only auditioning for the Summer Jazz Workshop should still prepare the Big Band portion of the audition to ensure proper large ensemble placement during the Summer Workshop.

If you have additional questions, please contact Jazz House Kids today at (973) 744-2273!

Manager of Student Services:

Daniela Gonzalez

dgonzalez@jazzhousekids.org

Workshop Director:

Ted Chubb

tchubb@jazzhousekids.org

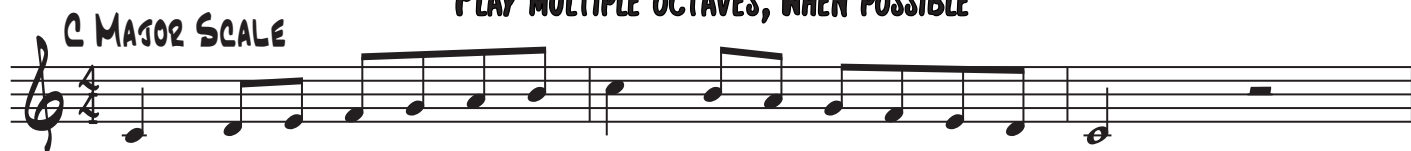
Director of Music Operations:

Markus Gottschlich

mgottschlich@jazzhousekids.org

JAZZ HOUSE AUDITION SCALES & ARPEGGIOS

PLAY MULTIPLE OCTAVES, WHEN POSSIBLE



PLAY AS MANY OF THE FOLLOWING SCALES AS POSSIBLE:

C MAJOR

B_b MAJOR

B MAJOR

F[#]/G_b MAJOR

**IF ABLE, ALL BRASS PLAYERS ARE STRONGLY ENCOURAGED TO PLAY A

2 OCTAVE C OR B_b MAJOR SCALE



PLAY AS MANY OF THE FOLLOWING ARPEGGIOS AS POSSIBLE:

G MAJOR 7 (GMAJ7)

D DOMINANT 7 (D7)

C MINOR 7 (C-7)

A MINOR 7_{b5} (A-7_{b5})

****PLEASE PLAY ONLY ONE OF THESE TWO PIECES FOR THE IMPROV SECTION****

E_b

BAGS' GROOVE

PLAY MELODY IN ANY COMFORTABLE REGISTER

MILT JACKSON

Musical notation for 'Bags' Groove' in 4/4 time, E-flat major. The piece consists of three staves of music. The first staff starts with a G7 chord and ends with a G7 chord. The second staff starts with a C7 chord and ends with a G7 chord. The third staff starts with an A minor 7 chord and ends with a G7 chord. The melody is written in treble clef and includes various rhythmic patterns and accidentals.

BLUES FOR ALICE

CHARLIE PARKER

Musical notation for 'Blues for Alice' in 4/4 time, E-flat major. The piece consists of three staves of music. The first staff starts with a D major 7 chord and ends with a D7 chord. The second staff starts with a G7 chord and ends with a Bb7 chord. The third staff starts with an E minor 7 chord and ends with an A7 chord. The melody is written in treble clef and includes various rhythmic patterns and accidentals.

E_b

My FUNNY VALENTINE

RODGERS/HART

STRAIGHT EIGHTHS ♩ = 80

2ND HALF OF MELODY

C^{MAJ7} D^{MIN7} E^{MIN7} D^{MIN7} C^{MAJ7} D^{MIN7} E^{MIN7} D^{MIN7}

C^{MAJ7} E7 A^{MIN} G^{MIN7} F#7 F^{MAJ7} B^{ø7} E7(b9)

A^{MIN} A^{MIN}Δ7 A^{MIN7} A^{MIN}6

F^{MAJ7} B^{ø7} E7(b9) A^{MIN} G^{MIN7} C7

F^{MAJ7} D^{MIN7} G7(b9) C6

Saxophone

Basie-Straight Ahead

composed & arranged
by Sammy Nestico

Big Band excerpt #1

swing $\text{♩} = 150$

Musical score for Saxophone, Big Band excerpt #1, swing tempo. The score is written in treble clef with a key signature of two sharps (F# and C#). It consists of six staves of music. The first staff begins with a first ending bracket labeled 'A' and a first ending sign. The second staff contains a melodic line with accents and slurs. The third staff contains a melodic line with accents and slurs, starting with a circled 'B'. The fourth staff contains a melodic line with accents and slurs, starting with a circled 'C'. The fifth staff contains a melodic line with accents and slurs. The sixth staff contains a melodic line with accents and slurs, ending with a second ending bracket. Dynamics include *f*, *mf*, and *f*. The tempo is marked as swing with a quarter note equal to 150 beats per minute.

Big Band excerpt #2

swing $\text{♩} = 135$

Musical score for Saxophone, Big Band excerpt #2, swing tempo. The score is written in treble clef with a key signature of one flat (Bb). It consists of three staves of music. The first staff begins with a first ending bracket labeled 'D' and a first ending sign. The second staff contains a melodic line with accents and slurs. The third staff contains a melodic line with accents and slurs. Dynamics include *f* and *mf*. The tempo is marked as swing with a quarter note equal to 135 beats per minute.